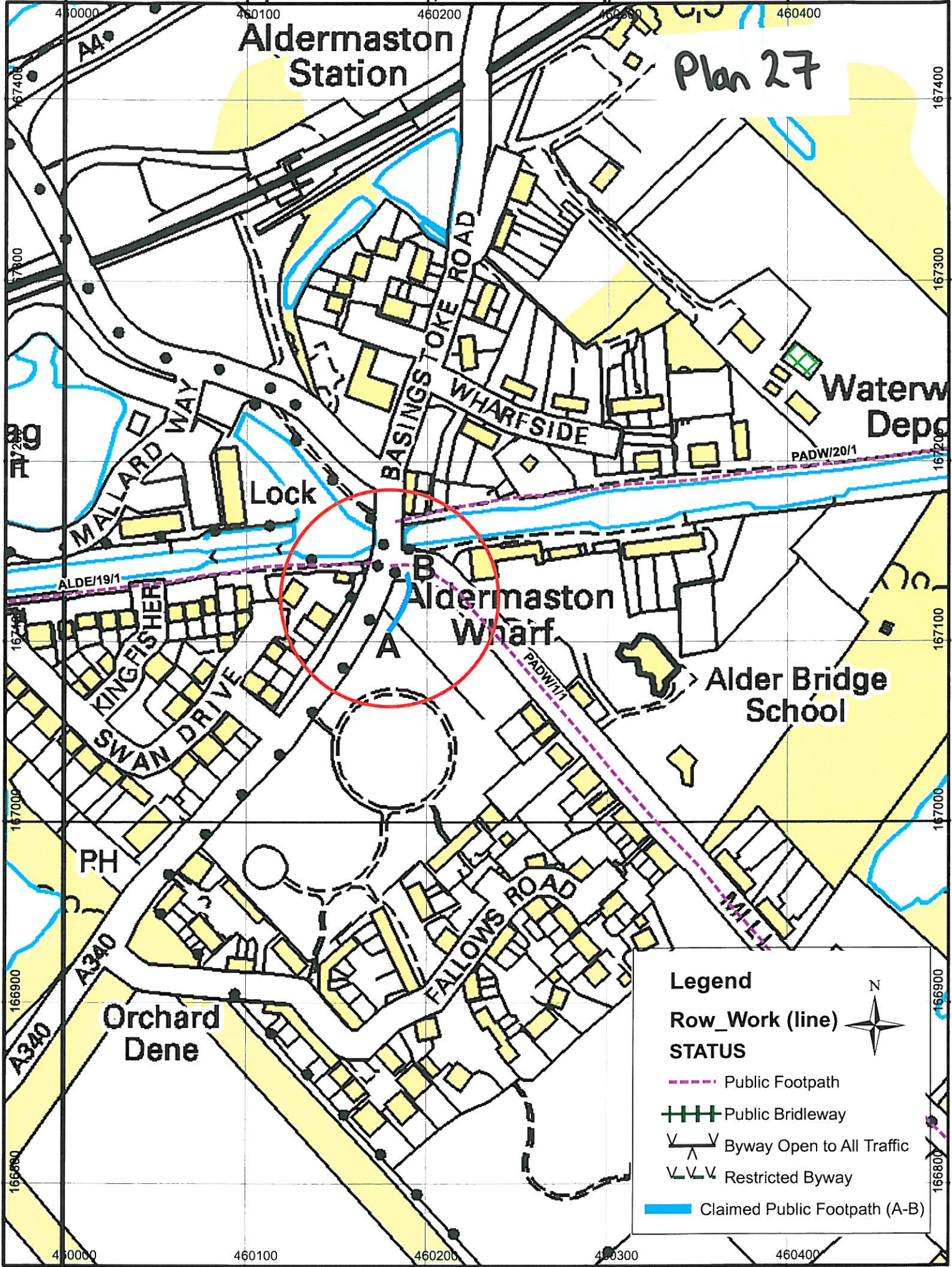


Claimed Public Footpath - Mill Lane, Padworth to open field

1:2500



Legend

Row_Work (line)

STATUS

- Public Footpath
- Public Bridleway
- Byway Open to All Traffic
- Restricted Byway
- Claimed Public Footpath (A-B)

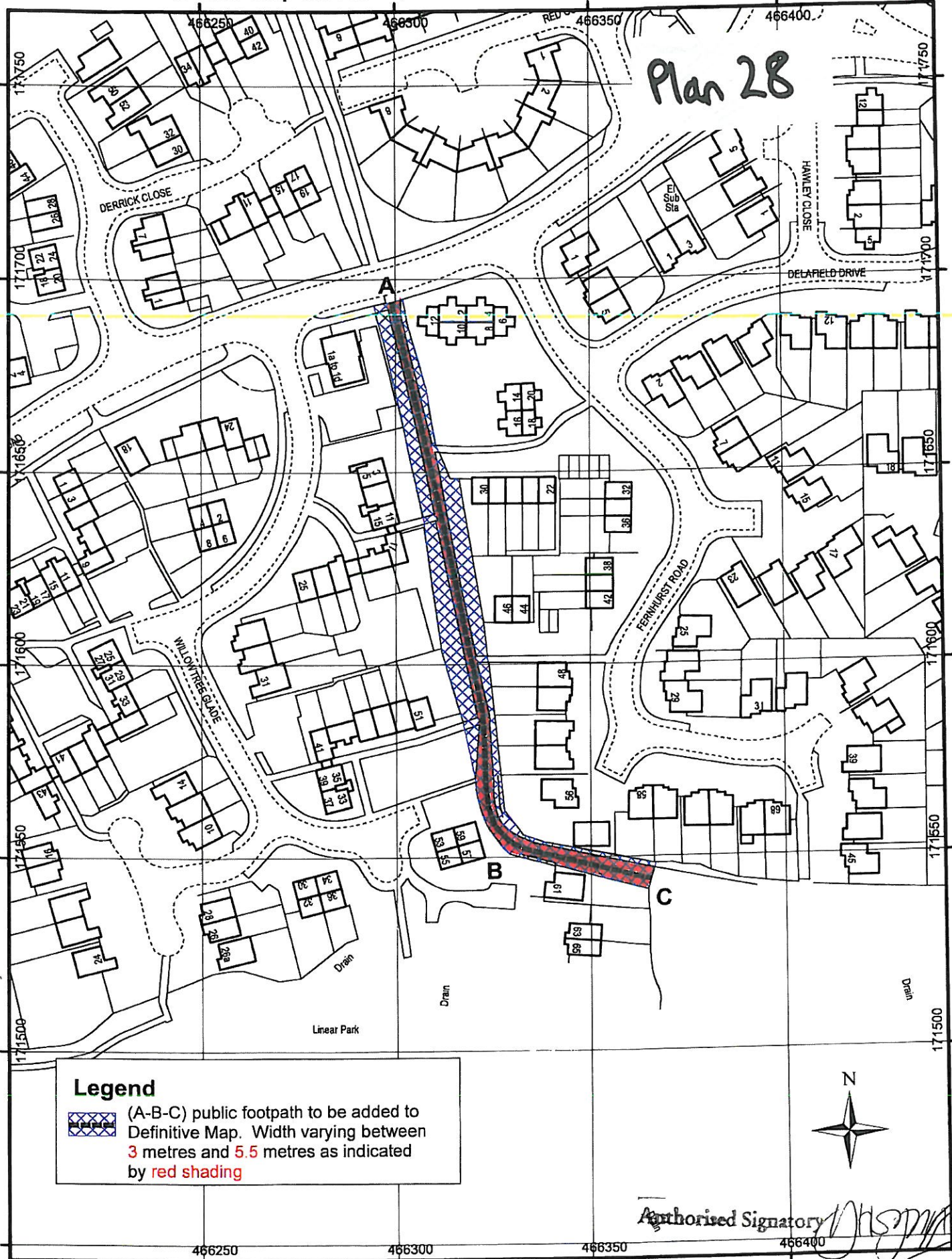



West Berkshire District Council (Cow Lane, Holybrook)
 Definitive Map Modification Order 2010


1:1250



Plan 28



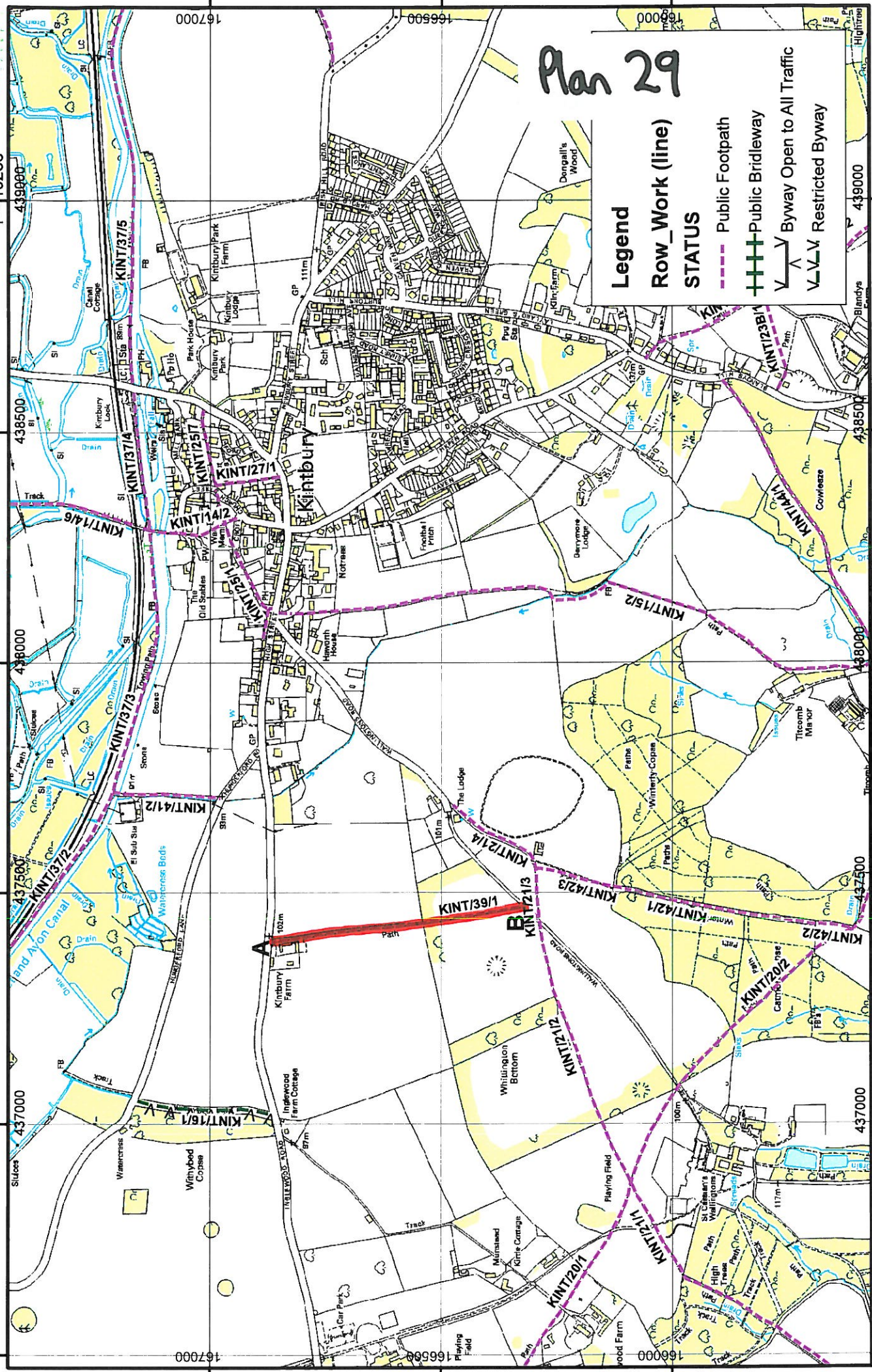
Legend
 (A-B-C) public footpath to be added to Definitive Map. Width varying between 3 metres and 5.5 metres as indicated by red shading

Authorised Signatory 

Claimed Restricted Byway over public footpath Kintbury 39 - route A-B



1 = 10238



Plan 29

Legend

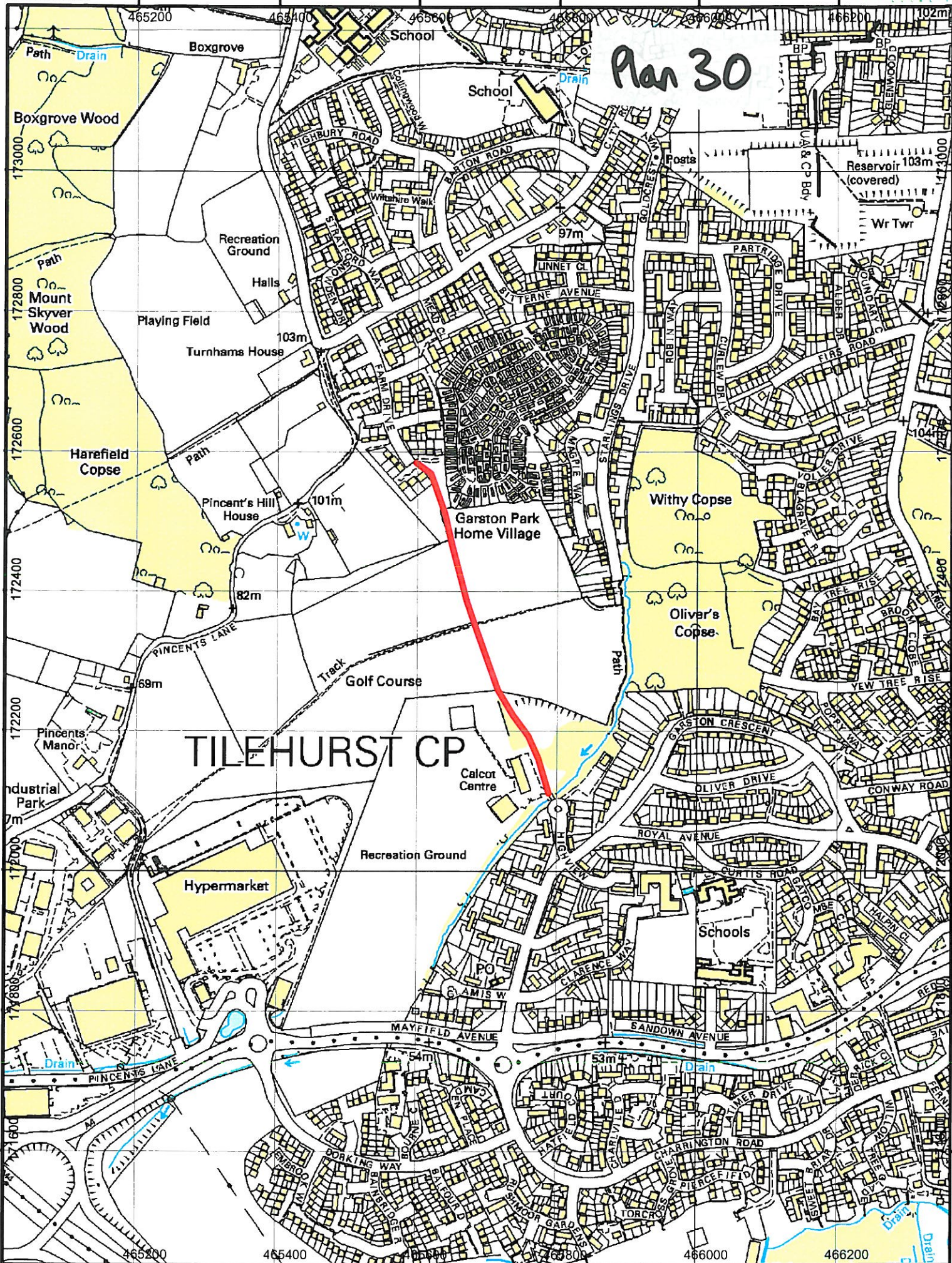
Row_Work (line)

STATUS

- Public Footpath
- Public Bridleway
- Byway Open to All Traffic
- Restricted Byway

Path from Farm Drive to Calcot Centre - path in red

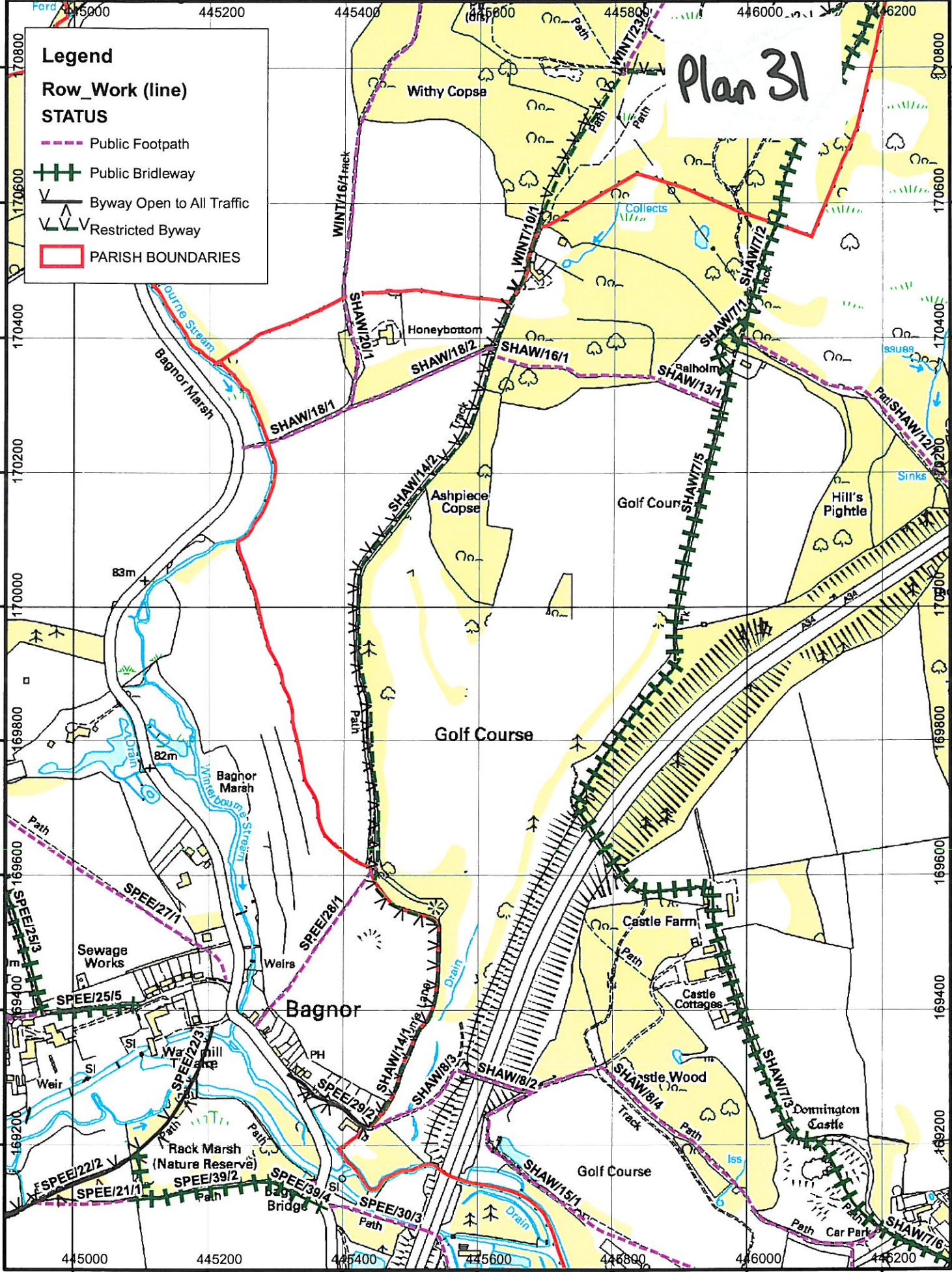
21/05/2009



Restricted Byway Shaw-cum-Donnington 14

1:7000

Plan 31



Legend

Row_Work (line)

STATUS

- Public Footpath
- Public Bridleway
- Byway Open to All Traffic
- Restricted Byway
- PARISH BOUNDARIES

Approximate route of claimed public footpath, Lynch Lane, Lambourn

