



**ROAD TRAFFIC REGULATION ACT 1984
WEST BERKSHIRE DISTRICT COUNCIL**

**(BYWAYS OPEN TO ALL TRAFFIC IN THE PARISHES OF
BUCKLEBURY, BOXFORD AND WINTERBOURNE)**

**(TEMPORARY PROHIBITION OF MECHANICALLY PROPELLED
VEHICLES) ORDER 2025**

West Berkshire District Council has **made** an Order in accordance with Section 14(1) of the Road Traffic Regulation Act 1984 and of all other powers enabling it to make such an Order to close various Byways Open to All Traffic to vehicles with 3 wheels or more in the Parishes of Bucklebury, Boxford and Winterbourne in order to prevent damage to the surface between November and May. All other users of the Byways will not be affected by the Order.

A list of the Byways included in this order are listed below, **IT INCLUDES THE BYWAY AHEAD OF YOU**. The restriction will only be in force when a notice is displayed at either end of the Byway stating the restriction. The Order will come into effect from **1st November 2025 and will remain in force until 1st May 2026**.

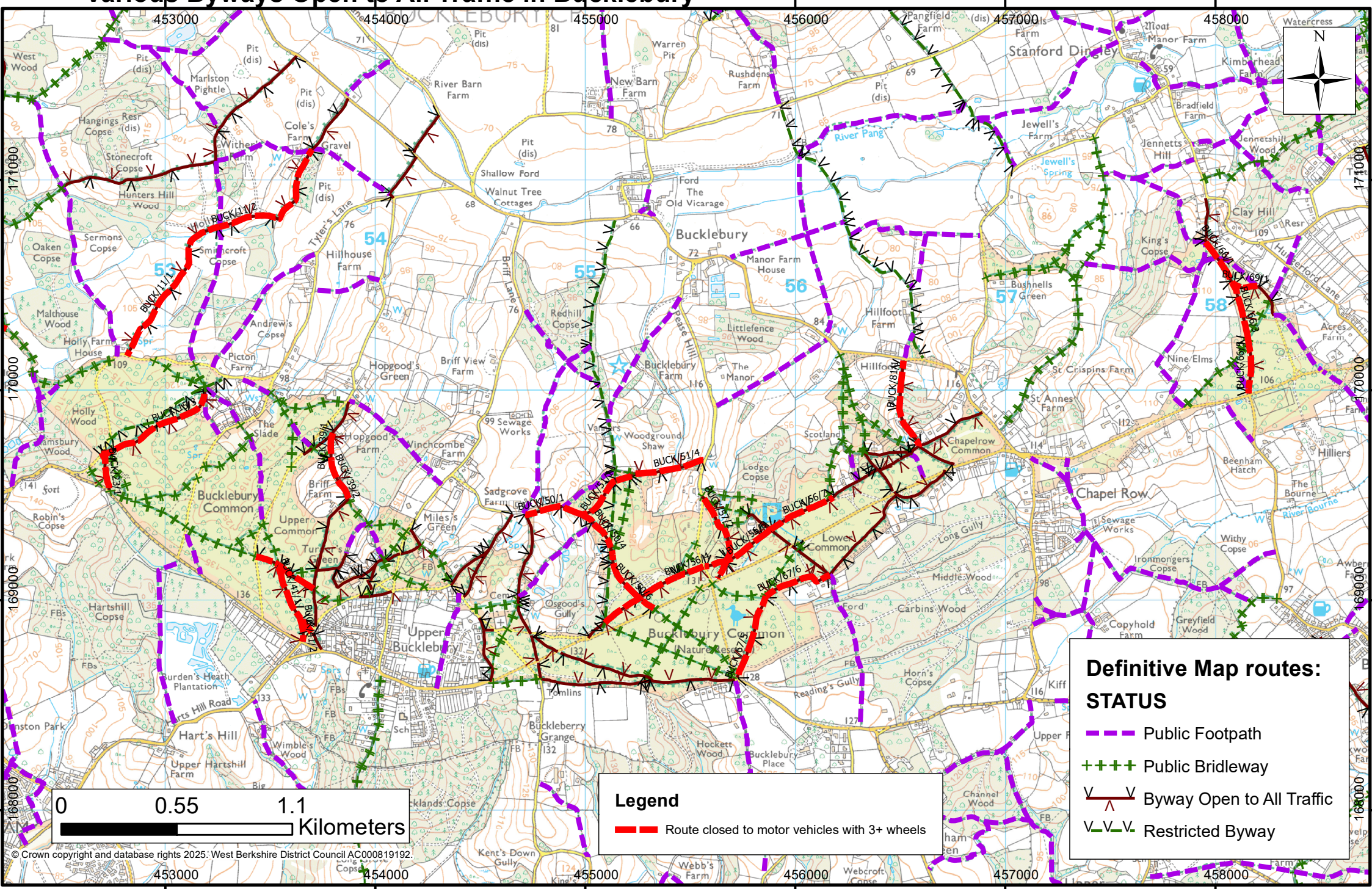
| |
|---|
| In the Parish of Bucklebury |
| 11/1 & 11/2, 15/1,2 and 3, 23/1 and 2, 28/1, 28/2 & 28/3, 39/1 and 2, 41/1, 41/2, 42/1, 50/1, 50/2, 50/3, 50/4, 50/5 & 50/6, 50/7, 51/1, 51/2, 51/3 & 51/4, 56/2, 56/3, 56/4, 56/5, 56/6 and 56/7, 57/1, 57/2, 57/3, 66/1, 66/2, 66/3 & 66/4, 66/5, 67/5, 67/6, 69/1, 81/1. |
| In the Parish of Boxford |
| 2/1, 2/2 |
| In the Parish of Winterbourne |
| 20/4 |

For further information please contact Elaine Cox, Senior Rights of Way Officer, Environment Department, Council Offices, Market Street, Newbury (01635 519069).

1st November 2025

Byway closures to motor vehicles with 3+ wheels, 1st Nov 2025 to 1st May 2026

Various Byways Open to All Traffic in Bucklebury



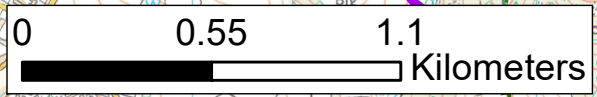
Definitive Map routes:

STATUS

- Public Footpath
- - - - Public Bridleway
- V Byway Open to All Traffic
- V Restricted Byway

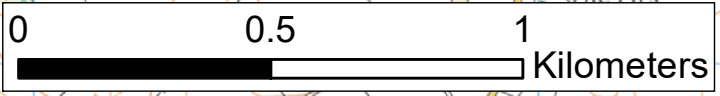
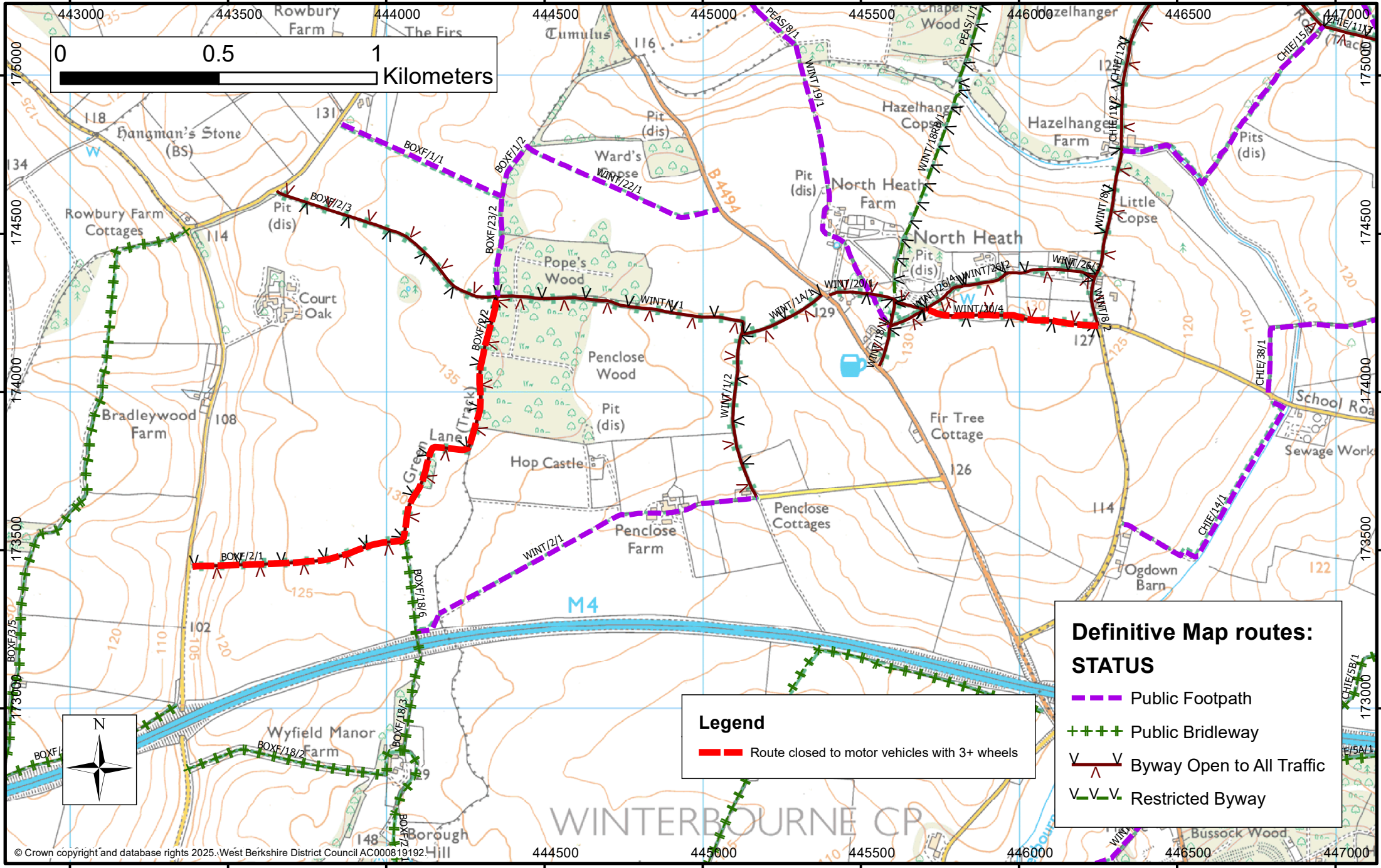
Legend

- Route closed to motor vehicles with 3+ wheels



Byway closures to motor vehicles with 3+ wheels, 1st Nov 2025 to 1st May 2026

Byways Open to All Traffic Boxford 2/1 & 2/2, and Winterbourne 20/4



Legend

- Route closed to motor vehicles with 3+ wheels

Definitive Map routes:

STATUS

- - - Public Footpath
- + + + Public Bridleway
- V ^ V Byway Open to All Traffic
- V _ V _ V Restricted Byway