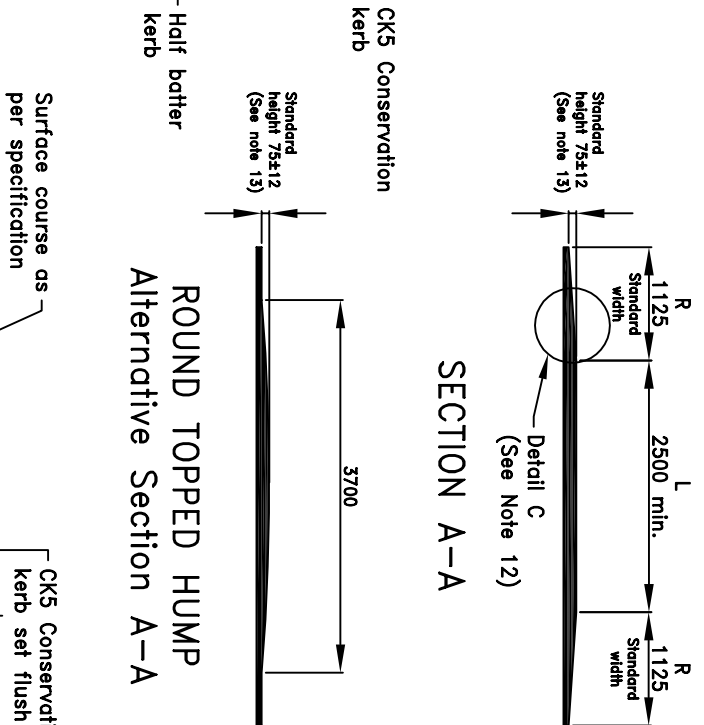


SECTION B-B



ROUND TOPPED HUMPS
Alternative Section A-A

DETAIL 'C'

STANDARD DRAWINGS

ROAD HUMPS
Flexible Construction

- Notes
- All dimensions are in millimetres
 - Position of humps shall comply with the Highways (Road Humps) Regulations 1999.
 - Position of humps and gullies shall be approved by the Overseeing Organisation prior to construction.
 - Length of hump shall be determined by the overall road layout and bus traffic.
 - Minimum length of round top hump shall be 3700.
 - Minimum length of plateau of flat topped hump 'L' shall be 2500.
 - On bus routes 'L' shall be 6000 min.
 - Where humps are installed at pedestrian crossing points 'L' shall be 3000 min.
 - For kerb detail see SD/1100/1, 2, 3 and 4 and for footway details see SD/1100/5 and 6.
 - Gullies shall be installed where hump impedes the flow in the channel.
 - Continuous edge of carriageway lines 100 wide shall be required on both sides of the carriageway and shall extend for 6000 either side of hump where required
 - Centre line markings shall be to Diag. 1004, 6000 module, 150 wide and the 4000 mark shall be centred over hump.
 - Height of ramp shall be approved by the Overseeing Organisation. Heights between 50 and 75 according to situation. On bus routes the height shall be 50.
 - Additional information on road humps: Traffic Advisory leaflet 2/96, 7/96 and 1/98.
 - Additional road signs shall be erected in advance of road humps. See Traffic Signs Regulations and General Directions 2002.

Drawn

M.G

Date
AUGUST 2015

Checked

B.S

Scale
NOT TO SCALE

Drawing No.

SD/1100/13