



Viewpoint 14: Looking west



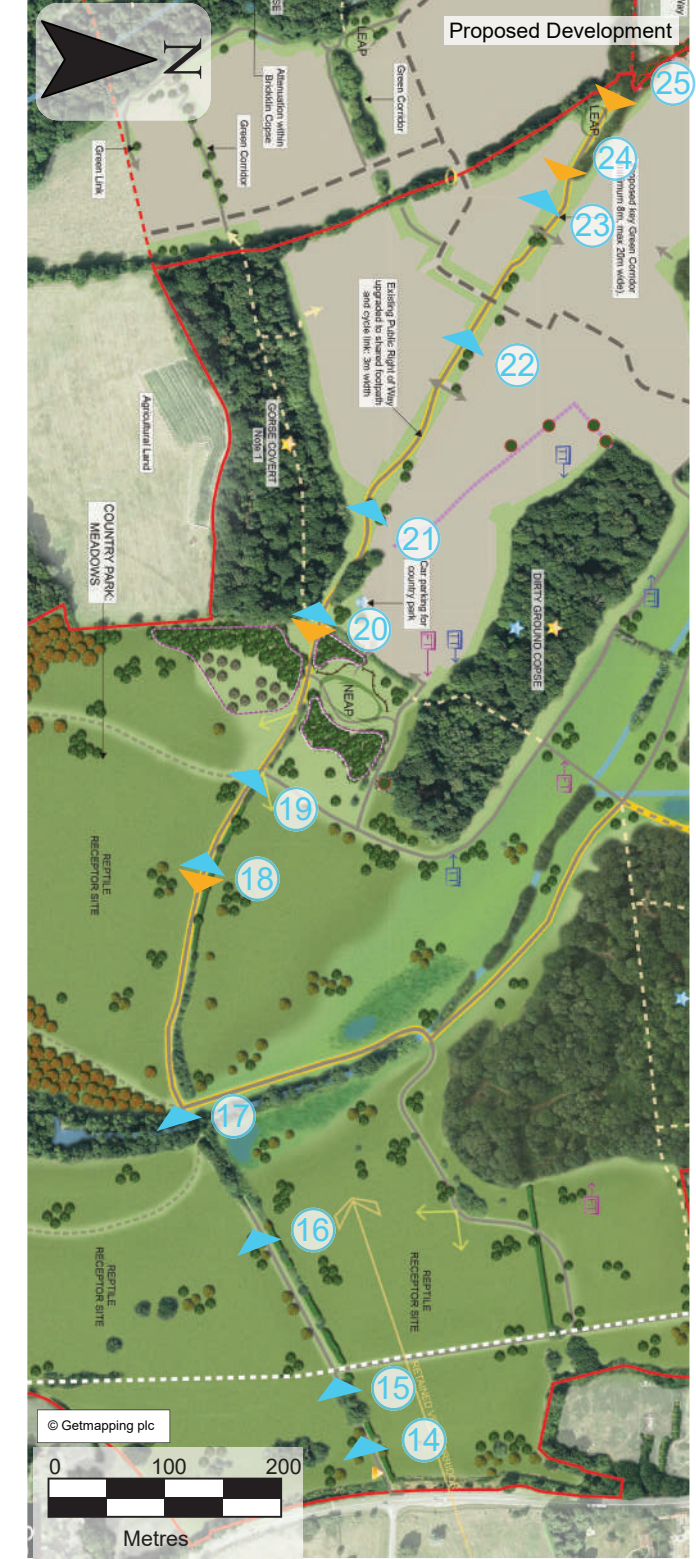
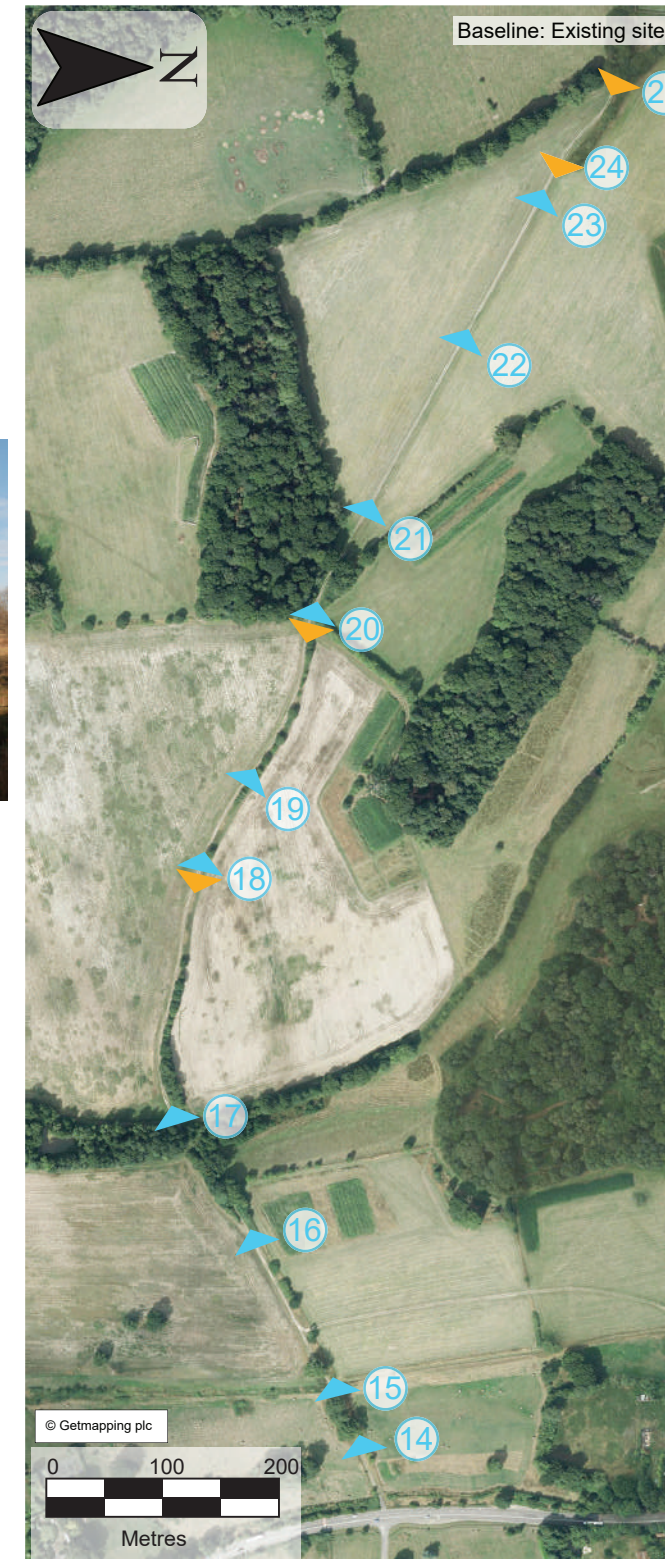
Viewpoint 15: Looking west



Viewpoint 16: Looking west



Viewpoint 17: Looking west



Notes:
Aerial photography flown in 2013.

SLR
3RD FLOOR
THE BREW HOUSE
JACOB STREET
BRISTOL, BS2 0EQ
T: 01179 064280
www.slrconsulting.com

SANDLEFORD PARK,
NEWBURY
ENVIRONMENTAL STATEMENT
SEQUENTIAL VIEWS FROM PUBLIC
FOOTPATH CROSSING COUNTRY
PARK AREA - SHEET 1 OF 4
04627.00005.16.625.2

Scale AS SHOWN Date JANUARY 2019



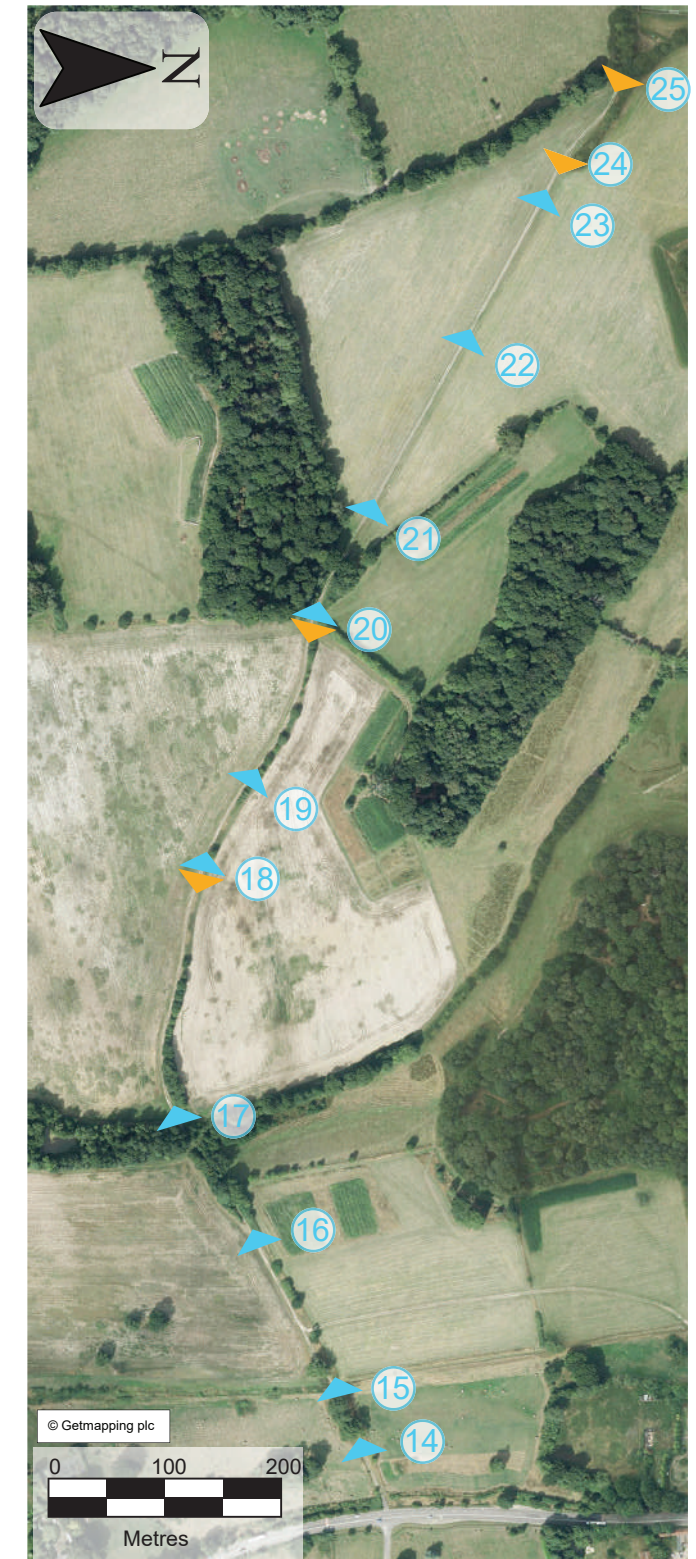
Viewpoint 18: Looking west



Viewpoint 18: Looking east



Viewpoint 19: Looking west



04627.00005.16.626-PROW SEQUENTIAL VIEWS SHEET 2

Notes:
Aerial photography flown in 2013.

SLR
3RD FLOOR
THE BREW HOUSE
JACOB STREET
BRISTOL, BS2 0EQ
T: 01179 064280
www.slrconsulting.com

SANDLEFORD PARK,
NEWBURY
ENVIRONMENTAL STATEMENT
SEQUENTIAL VIEWS FROM PUBLIC
FOOTPATH CROSSING COUNTRY
PARK AREA - SHEET 2 OF 4
04627.00005.16.626.2

Scale AS SHOWN	Date JANUARY 2019
-------------------	----------------------



Viewpoint 20: Looking west



Viewpoint 20: Looking east



Viewpoint 21: Looking west

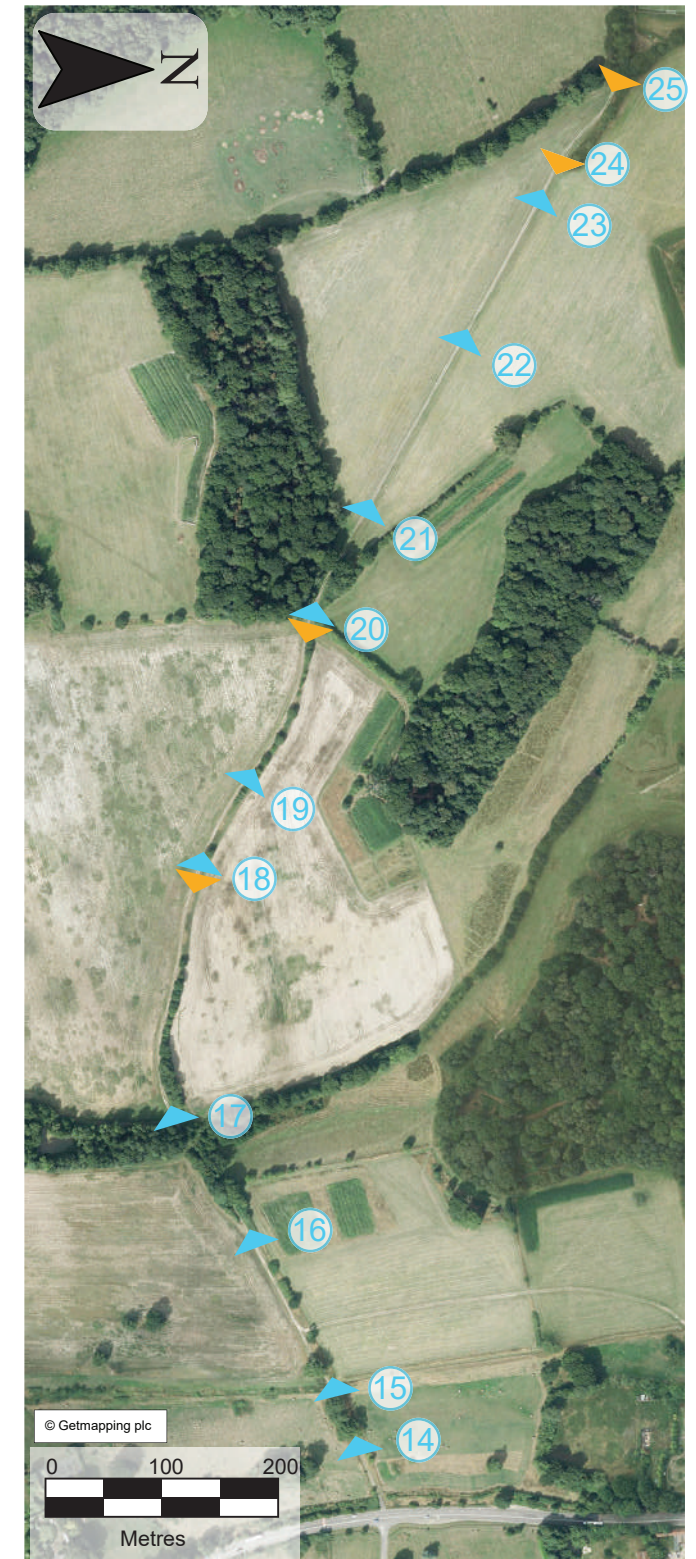


Viewpoint 22: Looking west



Viewpoint 23: Looking west

Notes:
Aerial photography flown in 2013.



SLR 

3RD FLOOR
THE BREW HOUSE
JACOB STREET
BRISTOL, BS2 0EQ
T: 01179 064280
www.slrconsulting.com

SANDLEFORD PARK,
NEWBURY

ENVIRONMENTAL STATEMENT

SEQUENTIAL VIEWS FROM PUBLIC
FOOTPATH CROSSING COUNTRY
PARK AREA - SHEET 3 OF 4

04627.00005.16.627.2

Scale AS SHOWN	Date JANUARY 2019
-------------------	----------------------

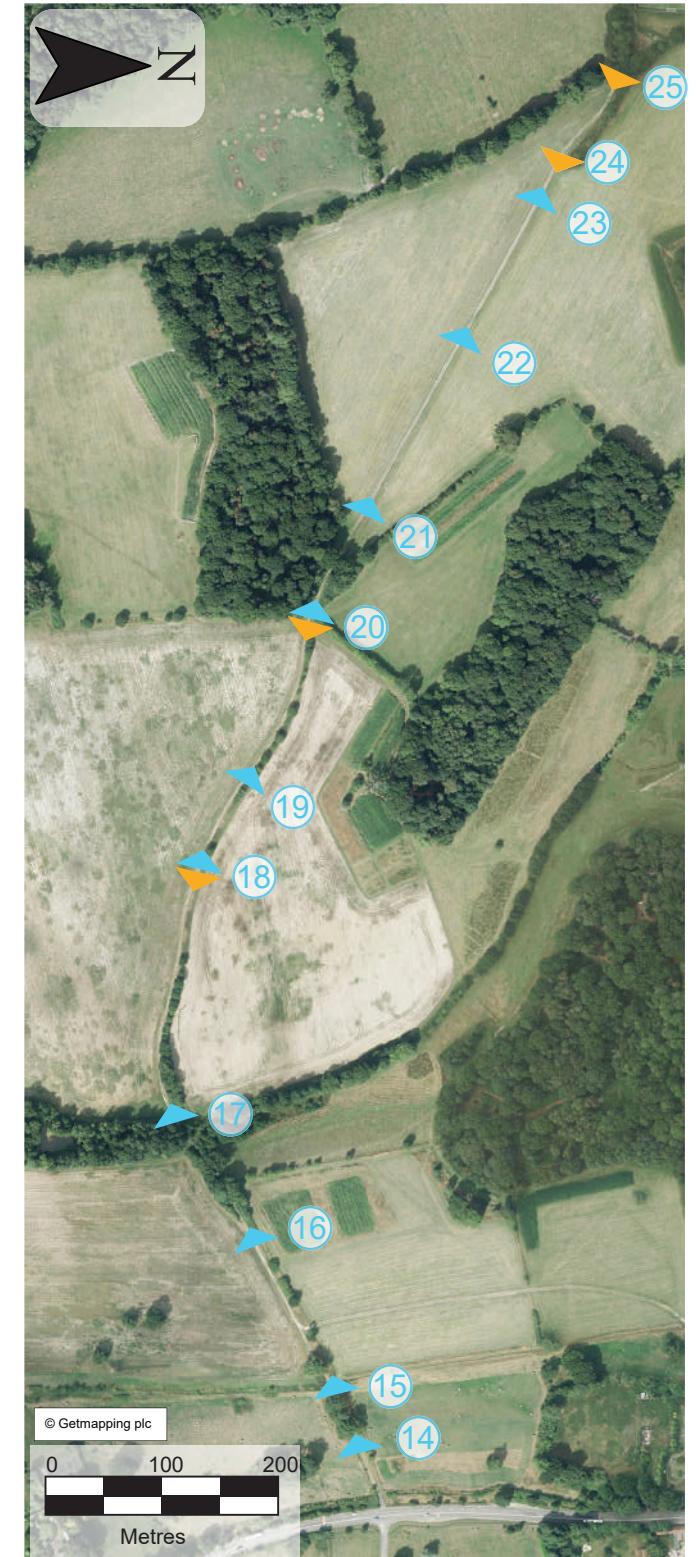



Viewpoint 24: Looking east



Viewpoint 25: Looking east

Notes:
Aerial photography flown in 2013.



	3RD FLOOR THE BREW HOUSE JACOB STREET BRISTOL, BS2 0EQ T: 01179 064280 www.slrconsulting.com
	SANDLEFORD PARK, NEWBURY <hr/> ENVIRONMENTAL STATEMENT <hr/> SEQUENTIAL VIEWS FROM PUBLIC FOOTPATH CROSSING COUNTRY PARK AREA - SHEET 4 OF 4 <hr/> 04627.00005.16.634.2
Scale AS SHOWN	Date JANUARY 2019